

EMPOWERING GENERATIONS THROUGH EDUCATION



## MOUNT KENYA UNIVERSITY RWANDA

EMPOWERING GENERATIONS  
THROUGH EDUCATION

### INTERNATIONAL PROSPECTUS 2021/2022

#### INTAKES:

REGULAR LEARNING, PART TIME OPEN DISTANCE AND ELECTRONIC LEARNING  
**JANUARY, MAY & SEPTEMBER**

DISTANCE, INSTITUTIONAL BASED AND E-LEARNING (DIBEL)  
**APRIL, AUGUST & DECEMBER**

NURSING  
**MAY & SEPTEMBER**

#### **MKUR MISSION**

*To disseminate and engender cutting edge education and training for business, science and technology in order to enhance the quality of lives and accelerate national development in Rwanda and the region.*

#### **MKUR VISION**

*To become a leading academic citadel for world class teaching and research in pursuit of cutting edge education in business, science and technology.*



## **MOUNT KENYA UNIVERSITY RWANDA**

EMPOWERING GENERATIONS  
THROUGH EDUCATION

#### **ADDRESS:**

Gatenga, Kicukiro District

#### **ADMISSION EMAIL:**

[admission@mkurwanda.ac.rw](mailto:admission@mkurwanda.ac.rw)

#### **ENQUIRIES EMAIL:**

[marketing@mkurwanda.ac.rw](mailto:marketing@mkurwanda.ac.rw)

#### **PHONES:**

+250 788 125088

#### **FACEBOOK**

[OfficialMountKenyaUniversityRwanda](#)

#### **TWITTER**

[@mountkenyaUniRw](#)

#### **INSTAGRAM:**

[mountkenyauniversityrwanda](#)

#### **VISIT:**

[www.mku.ac.ke](http://www.mku.ac.ke)

#### **MKUR OBJECTIVES**

- *To train and produce skilled professionals with ethical values that meet the current and projected capacity needs of Rwanda in terms of numbers, qualifications, skills and attitudes.*
- *To promote Science and Research in order to meet the community's welfare, business and social needs.*
- *To conduct seminars, workshops, conferences, short courses and offer consultancy services.*
- *To instruct students, conduct and administer examinations and confer degrees and certificates.*

#### **PHILOSOPHY**

*Empowering Generations with knowledge for the service of Humanity.*





# Why Study at MKU Rwanda

In pursuit of Higher Education, you have a good reason to choose MKU Rwanda as the university of choice. A few of those reasons enumerated here below among many others will suffice and include:

- Accreditation by the Rwanda. Higher Education Council (HEC)
- Affordable and flexible fees payment
- WI-FI internet accessibility
- Excellent academic resources
- Flexible Resources
- Relevant and Market-driven programmes
- Academic exchanges with foreign and local institutions of higher learning
- Multicultural diversity

## A great location within expansive space

Mount Kenya University Rwanda campus in Gatenga, Kicukiro district, is an aesthetic jewel within easy reach from Kigali city. The location is well served by public transport. It is reachable within a 15 minute-drive from Kigali city centre.

The campus is an architectural masterpiece, skilfully crafted to guide the future growth of the university and its precincts. It reflects the university's commitment to excellence and sustainability, and the need to address the set academic goals in keeping with Rwanda's economic growth.

The centre has the capacity to house over 5,000 students. It was constructed with the following in mind:

- The need to reflect the goals, vision and principles of Kigali's master plan.
- Proximity to Kigali city centre, hotels, industries, hospitals for referral studies and other institutions of learning for sharing of knowledge and extra-curricular activities.
- Enhancing pride in the community as well as creating more job opportunities.
- University's "People First Policy", which ensures

pedestrian-friendly grounds with green, open spaces, study villas, informal meeting places, access to public transportation and an environment conducive to academic excellence as well as vibrant student life.

The campus constitutes the following facilities:

- Administration block
- A highly resourceful library, also well-equipped with modern IT infrastructure
- School departments
- Science laboratories
- Sports department
- The Pavilion
- Royal FM Radio Station
- Male and female hostels with a swimming pool
- Modern Hospitality training facility
- Indoor and outdoor games

## Kigali sights and sounds

When you're a student of Mount Kenya University Rwanda, it's not all about studies. Rwanda, popularly known as the land of a thousand hills, is one of the safest and cleanest countries in Africa, rich with idiosyncratic and fascinating places to visit.

Kigali city boasts of over 100 leisure spots. Its nightlife is legendary. On any night of the week, you won't miss a club hosting an event that suits your taste. You'll find entertainment in many social places, including the shores of Lake Kivu beach on the outskirts of the city. The city has a vibrant cultural scene with varying events to keep you entertained. Handcraft outlets are also aplenty. Further, the city is home to some of East Africa's top musicians, some of whom have studied or are studying at Mount Kenya University Rwanda.

For those keen on gaining some deep historical perspectives, the Kigali Genocide Memorial is worth a visit. It is well within reach.

Kigali city is expanding. Hence, a new airport in Bugesera is coming up to add to the Kigali International Airport. The city also boasts the newly constructed Kigali Arena, presenting an option to the



modern Amahoro stadium in hosting various games every weekend. In Kigali, and indeed Rwanda, sports enjoy dedicated local following.

If you are in search of retail therapy, Kigali has a number of shopping malls. A number of cafes and restaurants strategically situated offering diverse culinary flavours.

Not far from the city to the east is lake Muhazi and the Akagera National Park near Kibungo. The park is home to elephants, buffalos, lions, leopards, hyenas and various bird species for those incline to ornithology.

Rwanda is home to a huge and diverse population of animals, including the world-famous mountain gorillas and the largest natural park of hippos. The county's most enthralling events include the chance to track the rare mountain gorillas through bamboo forests in the shadows of the Virunga volcanoes, and the world-famous ceremony known as 'kwita izina' (gorilla naming).

Gisenyi city in the west of Rubavu district is another attraction, featuring the scenic Lake Kivu with its beautiful beaches. The lake borders DR Congo.

Rwanda is blessed with a favourable climate, fine foods, hotels, a rich cultural heritage of arts and crafts, eco-tourism and a plethora of exciting activities like the safari rally, mountain biking, and trekking, among many others.

## Collaborations

Mount Kenya University Rwanda enjoys a strong international network of collaborators. This has greatly contributed to its enhanced quality teaching. The university enjoys collaborations with local and international institutions, among them Xavier University, Northern Kentucky University, Clarke University, University of Cincinnati, Foundation for Educational Excellence (AIFEE), Ohio State University, and the nearby Makerere and Dar es salaam universities. The areas of collaborations include research, exchange of teachers, development of joint scientific and/or technological projects, exchange of faculty and students, joint

programmes in consulting and evaluation, exchange of materials, articles and other publications, among others.

## Quality at the heart of MKUR

Our reputation for academic excellence attracts teachers, researchers and students from around the world, resulting in a friendly, open and multicultural environment.

More importantly, our students graduate with not only the degree qualifications, but also with the kind of exposure that helps them succeed in both local and international job markets. Our graduates stand tall and are first among equals in Rwanda for reaching high-level positions in private and government organisations.

Our commitment to quality is also reflected in the construction of the Kagarama campus in the Kicukiro district. MKUR offers staff and students a world-class environment for higher education. The university is recognised nationally for its strength in science and innovation, particularly in the areas such as Nursing, Medical laboratory and Public Health Sciences. The Campus in Kagarama has strengthened Mount Kenya University's reputation as one of the leaders in science and technology Education in Rwanda.

Whatever degree you choose, you can be sure that you will be leaving Mount Kenya University Rwanda well equipped and ready to compete with the best in the world..

# A warm welcome to MKU Rwanda

Rwanda is heralding the rise of the African continent not only in economic success, but also in internationalization of Education.

While majority of Mount Kenya University Rwanda students are Rwanda nationals, the institution has equally attracted a growing number of international students. Our mission is to provide international and competitive standards of cutting edge education and training in Health Sciences, Business, Hospitality and Tourism, Media/Communication, and Technology. These are our niche and flagship academic programmes. Indeed, the School of Nursing alone has most recently recorded the highest national applicant preference for those interested in entry level for the Nursing profession and those interested in advancing their education.

In order to achieve this noble mission, Mount Kenya University Rwanda has implemented its ten-year strategic plan which is anchored inter alia on Infrastructure, Teaching and Learning, Student Welfare and Research and Innovation. In the last four years, we have invested massive resources on the infrastructure which include a modern state-of-the-art campus with adequate science and computer laboratories.

Our modern library operations are automated using the Library Information Management System (KOHA) with Online Public Access Catalogue. It has a capacity of 450 students with internet access and over 11,000 books and 100,000 e-books. Journalism students also have unlimited access to the Royal FM radio station owned by the university and well-equipped studios for practicals.

We have also invested adequate resources for state-of-the-art culinary kitchen for hospitality training.

Our teaching and learning strategy is central to achieving our mission of international academic excellence and we have aligned it with Rwanda's Higher Education Council's Standards for Internal Quality Assurance.

The general welfare of students is supported by offices of the Deputy Vice-Chancellor in charge of Administration and the Dean of Students. As the Vice-Chancellor, I also advance ease of access to my office consultations and information sharing. It is critical for us to implement the well-being and psychological and physical health of our students. We have professional mentors for both academic and social welfare of students. Because one of our objectives is to promote independent and intellectual thinkers and problem-solvers, we require both our undergraduate and graduate students to undertake independent individual research which may engender academic publications and/or innovations. Mount Kenya University Rwanda is here to empower you with the best education experience.

**Prof. Edwin Odhuno, Ph.D.**  
*Vice-Chancellor Designate*





# Our Regular Programmes

## SCHOOL OF BUSINESS & ECONOMICS

### GRADUATE SCHOOL

*Please Note: Commencement of an option/specialisation in any postgraduates or undergraduates' programs will depend on the availability of enough students to constitute a class.*

Programmes	Admission Requirements	Duration
<b>Master of Business Administration (MBA)</b> <b>Regular &amp; Weekend</b> Options: <ul style="list-style-type: none"> <li>• Strategic Management</li> <li>• Project Management</li> <li>• Human Resources Management</li> <li>• Finance</li> <li>• Accounting</li> <li>• Entrepreneurship</li> </ul>	First Class or Upper Second Class Bachelor's degree from a recognized University or Second Class Bachelor's degree from a recognized University	<b>4 Semesters</b>  USD 1,000 Per Semester

### UNDERGRADUATE PROGRAMMES

Programmes	Admission Requirements	Duration
<b>Bachelor of Business Management (BBM)</b> Options: <ul style="list-style-type: none"> <li>• Finance &amp; Banking</li> <li>• Purchasing &amp; Supplies</li> <li>• Human Resource</li> <li>• International Business</li> <li>• Risk management</li> </ul>	Two principal passes and a subsidiary in any two subjects with a minimum of 13 points	<b>8 Semesters</b>  USD 500 Per Semester
<b>Bachelor of Commerce (BCM)</b> Options: <ul style="list-style-type: none"> <li>• Marketing Management</li> <li>• Accounting</li> </ul>	Two principal passes and a subsidiary in any two subjects with a minimum of 13 points	<b>8 Semesters</b>  USD 500 Per Semester
<b>Diploma in Business Management, Human Resource etc.</b>	Two principle passes and a subsidiary in any two subjects with a minimum of 10 grade points	<b>3 Semesters</b>  USD 500 Per Semester



# SCHOOL OF EDUCATION

## GRADUATE SCHOOL

*Please Note: Commencement of an option/specialisation in any postgraduates or undergraduates' programs will depend on the availability of enough students to constitute a class.*

Programmes	Admission Requirements	Duration
<b>Master of Education - Planning and Management</b>	First Class or Upper Second Class Bachelor of Education degree or Second class Division from a recognised University, Or a non-teaching degree accompanied by a postgraduate diploma in Education	<b>4 Semesters</b>  USD 1,000 Per Semester
<b>Master of Education (Mathematics Education)</b> - School based	Bachelor of Education in Mathematics related courses	<b>4 Semesters (18 months)</b>  USD 1,000 Per Semester
<b>Post-Graduate Diploma in Education</b> (School Based & Online)	First Class or Upper Second Bachelor's Degree or Second Lower Division from a recognised University.	<b>3 Semesters (1 year)</b>  USD 500 Per Semester

## UNDERGRADUATE PROGRAMMES

Programmes	Admission Requirements	Duration
<b>Bachelor of Education</b> Primary Option With: Primary Mathematics, Mathematics & Physical Education, Social Studies & Integrated English, Social Studies & Integrated Kiswahili	Two principal passes and a subsidiary with 13 grade points in RNEC-S6 or a Diploma from a recognized Institution of Higher Learning	<b>8 Semesters</b>  USD 500 Per Semester

# SCHOOL OF EDUCATION

Programmes	Admission Requirements	Duration
<b>Bachelor of Education: Sciences &amp; Arts</b> <b>Sciences: (School Based)</b> Biology & Chemistry, Mathematics & Chemistry, Mathematics & Computer, Mathematics & Physics <b>Arts: (School Based)</b> Economics & Entrepreneurship, Economics & Geography, English & Entrepreneurship, English & Literature, English & Swahili, Geography & Entrepreneurship, History & Geography	A senior six certificate with Two principal passes and a Diploma from a recognised University.	<b>8 Semesters</b>  USD 500 Per Semester

# SCHOOL OF HEALTH SCIENCES

## GRADUATE SCHOOL

*Please Note: Commencement of an option/specialisation in any postgraduates or undergraduates' programs will depend on the availability of enough students to constitute a class.*

Programmes	Admission Requirements	Duration
<b>Master of Public Health (MPH)</b>	A degree in the Health Science such as (Human and Veterinary. Pharmacy, Dentistry or Nursing or any other related field. A degree in Social Sciences such as social work, Sociology, Economics, Demography A degree in Biological Sciences such as Statistics, Environmental sciences, Biology and Laboratory Sciences A degree in Water and Civil Engineering and other Science related fields.	<b>4 Semesters</b>  USD 1,333 Per Semester



## UNDERGRADUATE PROGRAMME

Programmes	Admission Requirements	Duration
<b>Bachelor of Public Health (BPH)</b> - offered during weekends	Two principal passes in Biology, Chemistry (A,B,C) and a subsidiary in either Physics or Mathematics or a Diploma in a related field from a recognized institution of higher learning. OR Bachelor's Degree or Advanced Diploma from a recognized institution in the following areas: Environmental health; environmental studies; pharmacy; nursing; clinical medicine; public health; community health, nutrition and other health related courses recognised by the University Senate.	<b>8 Semesters</b>  USD 500 Per Semester

## DEPARTMENT OF NURSING

### UNDERGRADUATE PROGRAMMES

Programmes	Admission Requirements	Duration
<b>Bachelor of Science in Nursing (BScN)</b> - A1 holders-upgrading Please note: Attendance mode is from 8AM to 5PM, Saturday - Sunday	<ul style="list-style-type: none"> <li>Advanced Diploma in General Nursing</li> <li>Registration certificate and license from NCNM</li> <li>International students should possess a license to practice as a nurse in country of origin, prior being licensed by NCNM</li> <li>Senior six certificate with principal passes in Biology, Chemistry and subsidiary in Maths/ Physics.</li> <li>Two Years from time of registration by the Nursing Council</li> </ul>	<b>5 Semesters</b>  USD 667 Per Semester
<b>Bachelor of Science in Nursing (BScN) - Day time programme - Direct Entry</b>	Two principal passes in Biology & Chemistry and a subsidiary pass in either Mathematics or Physics	<b>8 Semesters</b>  USD 667 Per Semester

# DEPARTMENT OF MEDICAL LABORATORY

## UNDERGRADUATE PROGRAMME

Programmes	Admission Requirements	Duration
<b>Bachelor of Science in Medical Laboratory Sciences</b>	Two principal passes in Biology, Chemistry (A, B or C) and a subsidiary in either Mathematics or Physics	<b>8 Semesters</b> USD 667 Per Semester

# DEPARTMENT OF SOCIAL SCIENCES

## UNDERGRADUATE PROGRAMME

Programmes	Admission Requirements	Duration
<b>Bachelor of Arts in Social Work and Administration</b>	Two principal passes and a subsidiary in Arts /sciences related subjects/13 points or a Diploma from a recognised University	<b>8 Semesters</b> USD 500 Per Semester

# DEPARTMENT OF JOURNALISM & MASS COMMUNICATION

## GRADUATE SCHOOL

*Please Note: Commencement of an option/specialisation in any postgraduates or undergraduates' programs will depend on the availability of enough students to constitute a class.*

Programmes	Admission Requirements	Duration
<b>Master of Arts in Journalism and Media Studies - MJMS (Offered online)</b>	First Class or Upper Second Class Upper Bachelor's degree in Mass Communication or any other media related background from a recognised University. A Second Class Bachelor's degree from a recognised University	<b>4 Semesters</b> USD 1,000 Per Semester



## UNDERGRADUATE PROGRAMME

Programmes	Admission Requirements	Duration
<b>Bachelor of Communication and Mass Media</b>	Two passes in English, and a subsidiary in any related Arts subjects with 13 points or a Diploma from a recognised University.	<b>8 Semesters</b> USD 500 Per Semester

## DEPARTMENT OF COMPUTING AND INFORMATICS

### UNDERGRADUATE PROGRAMMES

Programmes	Admission Requirements	Duration
<b>Bachelor of Business Information Communication Technology (BBICT)</b>	Two principal passes and a subsidiary in any two of the following subjects: Mathematics, Physics, Computer, Web Design, Electricity, Economics, entrepreneurship or any other subject with above 13 grade points in RNEC-S6 or a Diploma from a recognised University	<b>8 Semesters</b> USD 667 Per Semester
<b>Bachelor of Science in Information Technology (BSc. IT)</b>	Two principal passes and a subsidiary in any two of the following subjects: Mathematics, Physics, Computer, Web Design, Electricity, or any other subject with above 13 grade points in RNEC-S6 or a Diploma from a recognised University	<b>8 Semesters</b> USD 500 Per Semester

## DEPARTMENT OF HOSPITALITY, TRAVEL AND TOURISM MANAGEMENT

### UNDERGRADUATE PROGRAMME

Programmes	Admission Requirements	Duration
<b>Bachelor of Science in Hospitality &amp; Tourism Management</b>	Two principal passes and a subsidiary in Arts /sciences related subjects/13 points or a Diploma from a recognised University,	<b>8 Semesters</b> USD 667 Per Semester



A close-up photograph of a person's hand with a silver ring on the ring finger, resting on a black smartphone. The phone is lying on a rustic wooden surface. In the background, a laptop with a blue cover and a black bag are partially visible. The text 'Our Digital Programmes' is overlaid in white, bold, sans-serif font.

# Our Digital Programmes



# SCHOOL OF BUSINESS AND ECONOMICS

## GRADUATE PROGRAMMES

Programmes	Admission Requirement	Duration
<b>Master of Business Administration (MBA)</b> <i>Regular &amp; Weekend-Options</i> <ul style="list-style-type: none"> <li>• Strategic Management</li> <li>• Project Management</li> <li>• Human Resources Management</li> <li>• Finance</li> <li>• Accounting</li> <li>• Entrepreneurship.</li> </ul>	First Class or Upper Second Class Bachelor's degree from a recognized University or Second Class Bachelor's degree from a recognized University	<b>4 Trimesters</b>  USD 1,000 Per Semester
<b>Masters of Public Administration &amp; Management</b> Specializations: Public Policy and Administration Devolved Government Administration Community Development and NGO Management	First Class or Upper Second Class Upper Division or Second Lower Class Division from a recognized University	<b>4 Trimesters</b>  USD 1,000 Per Semester
<b>Master of Science in Procurement and Supplies Management</b>	First Class or Upper Second class upper division or Second Lower class Division from a recognized University	<b>4 Trimesters</b>  USD 1,000 Per Semester

## POST GRADUATE DIPLOMA PROGRAMMES

Programmes	Admission Requirement	Duration
<b>Post graduate diploma in Project Planning and Management</b>	At a least a Bachelor's Degree from a recognised university	<b>4 Trimesters</b>  USD 500 Per Semester

## UNDERGRADUATE PROGRAMMES

Programmes	Admission Requirement	Duration
<b>Bachelor of Business Management (BBM)</b> Specialisations: <ul style="list-style-type: none"> <li>• Human Resource Management</li> <li>• Banking &amp; Finance</li> <li>• Purchasing and Supply</li> <li>• International Business</li> <li>• Risk Management &amp; Insurance</li> </ul>	Two principal passes and a subsidiary in any two subjects with above 13 grade points in RNEC-S6	<b>8 Trimesters</b> USD 500 Per Semester
<b>Bachelor of Commerce (BCOM)</b> Specialisations: <ul style="list-style-type: none"> <li>• Accounting</li> <li>• Marketing Management</li> </ul>	Two principal passes and a subsidiary in any two subjects with above 13 grade points in RNEC-S6 or a Diploma from a recognised institution	<b>8 Trimesters</b> USD 500 Per Semester
<b>Bachelor of Office Administration and Management</b>	Two principal passes and a subsidiary in any two subjects with above 13 grade points in RNEC-S6	<b>8 Trimesters</b> USD 500 Per Semester

## SCHOOL OF EDUCATION

### GRADUATE PROGRAMME

Programmes	Admission Requirement	Duration
<b>Master of Education (MED)</b> Options <ul style="list-style-type: none"> <li>• Administration Management and Leadership.</li> <li>• Curriculum Studies.</li> <li>• Instructional Technology.</li> <li>• Educational Planning.</li> <li>• Philosophy of Education.</li> <li>• Economics of Education</li> </ul>	First Class or Upper Second Class related degree from a recognised university	<b>8 Trimesters</b> USD 1,000 Per Semester

# SCHOOL OF EDUCATION

## POST GRADUATE DIPLOMA PROGRAMME

<i>Programmes</i>	<i>Admission Requirement</i>	<i>Duration</i>
<b>Post graduate diploma in Education (PGDE)</b>	At a least a Bachelor's Degree from a recognised university	<b>4 Trimesters</b> USD 500 Per Semester

## UNDERGRADUATE PROGRAMMES

<i>Programmes</i>	<i>Admission Requirement</i>	<i>Duration</i>
<b>Bachelors of Education (Arts) English &amp; Literature</b>	Two principal passes and a subsidiary with 13 grade points in RNEC	<b>8 Trimesters</b> USD 500 Per Semester
<b>Bachelors of Early Childhood Studies (Primary option or Community Development)</b>	Two principal passes and a subsidiary with 13 grade points in RNEC-S6	<b>8 Trimesters</b> USD 500 Per Semester

# SCHOOL OF PUBLIC HEALTH

The school offers world-class teaching, learning, research, innovation and investments in public health. It houses programmes in Nutrition and Dietetics, Food Science and Processing Technology, Health Systems Management, Public Health in Reproductive Health, Food Hygiene and Safety, and Environmental Health.

## GRADUATE PROGRAMME

<i>Programmes</i>	<i>Admission Requirement</i>	<i>Duration</i>
<b>Master of Public Health (MPH)</b>	A Bachelor degree in Public Health or related Degree from a recognised University	<b>4 Semesters</b> USD 1,333 Per Semester

# SCHOOL OF CLINICAL MEDICINE

## UNDERGRADUATE PROGRAMME

<i>Programmes</i>	<i>Admission Requirement</i>	<i>Duration</i>
<b>Bachelor of Science in Health Records and Information Management</b>	Two principal passes and a subsidiary with 13 grade points in RNEC-S6 or a diploma from a recognised institution of higher learning	<b>8 Trimesters</b> USD 1,167 Per Semester

# DEPARTMENT OF NURSING

## GRADUATE PROGRAMME

<i>Programmes</i>	<i>Admission Requirement</i>	<i>Duration</i>
<b>Master of Science in Nursing</b>	A degree in the Health Sciences such Human and Veterinary Pharmacy, Dentistry or Nursing or any other related field. OR A degree in Biological Sciences such as Strategic Environmental Sciences, Biology, and Laboratory Sciences. OR A degree in Water and Civil Engineering and otherScience related fields	<b>4 Trimesters</b> USD 1,333 Per Semester



# DEPARTMENT OF SOCIAL SCIENCES

## Institute of Security Studies, Justice and Ethics

### GRADUATE PROGRAMMES

<i>Programmes</i>	<i>Admission Requirement</i>	<i>Duration</i>
<b>Master of Arts Governance and Ethics (MAGE)</b>	First Class or Upper Second Class upper division or Second Lower class Division from a recognised University	<b>4 Trimesters</b> USD 1,000 Per Semester
<b>Master of Arts in Monitoring and Evaluation</b>	First Class or Upper Second Class Upper Division or Second Lower Class Division from a recognised University	<b>4 Trimesters</b> USD 1,000 Per Semester

### UNDERGRADUATE PROGRAMMES

<i>Programmes</i>	<i>Admission Requirement</i>	<i>Duration</i>
<b>Bachelor of Arts in Peace Studies and Conflict Resolution (BAPSCR)</b>	Two principal passes and a subsidiary in any related Arts / Science subject with 13 grade points in RNEC-S6 or a diploma from a recognised institution of higher learning	<b>8 Trimesters</b> USD 500 Per Semester
<b>Bachelor of Arts in Security Studies and Criminology (BACSM)</b>	Two principal passes and a subsidiary in any related Arts / Science subject with 13 grade points in RNEC-S6 or a diploma from a recognised institution of higher learning	<b>8 Trimesters</b> USD 500 Per Semester
<b>Diploma in security Studies and Criminology</b>	Two principal passes and a subsidiary in any related Arts/ Science subject with a minimum of 10points in RNEC-S6	<b>5 Trimesters</b> USD 500 Per Semester

## Department of Social and Development Studies

### GRADUATE PROGRAMMES

<i>Programmes</i>	<i>Admission Requirement</i>	<i>Duration</i>
<b>Master of Arts in Development Studies (MADS)</b>	First Class or Upper Second Class Upper Division or Second Lower Class Division from a recognised University	<b>4 Trimesters</b> USD 1,000 Per Semester

<i>Programmes</i>	<i>Admission Requirement</i>	<i>Duration</i>
<b>Master of Arts in Monitoring and Evaluation</b>	First Class or Upper Second Class Upper Division or Second Lower Class Division from a recognised University	<b>4 Trimesters</b> USD 1,000 Per Semester

## UNDERGRADUATE PROGRAMMES

<i>Programmes</i>	<i>Admission Requirement</i>	<i>Duration</i>
<b>Bachelor of Arts in Development Studies</b>	Two principal passes and a subsidiary in any related Arts / Science subject with 13 grade points in RNEC-S6 or a diploma from a recognised institution of higher learning	<b>8 Trimesters</b> USD 500 Per Semester
<b>Diploma in Community Development</b>	Two principal passes and a subsidiary in any related Arts/ Science subject with a minimum of 10 points in RNEC-S6	<b>3 Trimesters</b> USD 500 Per Semester

## Department of Psychology

### GRADUATE PROGRAMME

<i>Programmes</i>	<i>Admission Requirement</i>	<i>Duration</i>
<b>Master of Arts Counseling and Psychology</b>	First Class or Upper Second Class Division in Counselling or other related fields from a recognised university	<b>4 Trimesters</b> USD 1,000 Per Semester

### UNDERGRADUATE PROGRAMME

<i>Programmes</i>	<i>Admission Requirement</i>	<i>Duration</i>
<b>Bachelor of Counseling Psychology</b>	Two principal passes and a subsidiary in any related Arts / Science subject with 13 grade points in RNEC-S6	<b>8 Trimesters</b> USD 500 Per Semester

# Department of Humanities and Language

## GRADUATE PROGRAMME

Programmes	Admission Requirement	Duration
<b>Master of Arts in International Relations and Diplomacy</b> Specialisations: <ul style="list-style-type: none"> <li>• <i>International Relations</i></li> <li>• <i>Diplomacy</i></li> </ul>	First Class or Upper Second Class Upper Division or Second Lower class Division from a recognised University	<b>4 Trimesters</b>  USD 1,000 Per Semester

## UNDERGRADUATE PROGRAMME

Programmes	Admission Requirement	Duration
<b>Diploma in Public relations and Diplomacy</b>	Two principal passes and a subsidiary in any related Arts/ Science subject with a minimum of 10points in RNEC-S6	<b>4 Trimesters</b>  USD 500 Per Semester

# Department of Journalism and Mass Communication

This programme reflects the changes that have transformed journalism and the communication field (and by implication society) in recent years. You will learn from respected journalists and other industry experts, exploring what it means to work with new technologies in today's multimedia newsrooms and workplaces.

## GRADUATE PROGRAMME

Programmes	Admission Requirement	Duration
<b>Bachelor of Communication and Mass Media</b> Specialisations: <ul style="list-style-type: none"> <li>• <i>Public Relation</i></li> <li>• <i>Advertising</i></li> </ul>	Two principal passes and a subsidiary in any related Arts/ Science subject with 13 grade points in RNEC-S6 or a diploma from a recognised institution of higher learning. Evidence of English proficiency mandatory	<b>8 Trimesters</b>  USD 500 Per Semester

# DEPARTMENT OF COMPUTING & INFORMATICS

## UNDERGRADUATE PROGRAMMES

<i>Programmes</i>	<i>Admission Requirement</i>	<i>Duration</i>
<b>Bachelor of Business Information Communication Technology (BBICT)</b>	Two principal passes and a subsidiary in any two of the following subjects: Mathematics, Physics, Computer, Web Design, Electricity, Economics, entrepreneurship or any other subject with above 13 grade points in RNEC-S6 or a Diploma from a recognised University	<b>8 Trimesters</b> USD 667 Per Semester
<b>Bachelor of Science in Information Technology (BSc.IT)</b>	Two principal passes and a subsidiary in any two of the following subjects: Mathematics, Physics, Computer, Web Design, Electricity, or any other subject with above 13 grade points in RNEC-S6 or a Diploma from a recognised University	<b>8 Trimesters</b> USD 500 Per Semester
<b>Bachelor of Information Science</b> <b>Specialisations:</b> <ul style="list-style-type: none"> <li>• <i>Information and Communication Technology</i></li> <li>• <i>Library and Information Science</i></li> <li>• <i>Record management</i></li> </ul>	Two principal passes and a subsidiary with 13 grade points in RNEC-S6 or a diploma from a recognised institution of higher learning	<b>8 Trimesters</b> USD 500 Per Semester



# WE ARE AN INTERNATIONAL FAMILY

Mount Kenya University Rwanda has the reputation of empowering generations through education from around the world. We have been doing this since our inception. Not only do we understand different cultures and needs, but are also aware of the importance of what a university education means to you.

Your experience at our university will help shape what you do for the rest of your life. Everything we do is geared towards making sure we impart in you the right and relevant academic skills, specially designed to be applicable in the ever-changing and competitive world. We are keen to help you fulfil your ambitions and aspirations.

The university works with some large organisations in the region towards ensuring our programmes are industry-focused. Our graduates leave with the skills, qualifications and versatility that employers are keen to lay hands on when shopping for employees.

Many of our staff are regarded as leading experts in their fields of specialisation. They are recognised nationally and internationally.

Add to that, our Students' Union will advise you on all issues affecting students. If you are a foreign student, there are support staff across the campus, ready to advise you on anything and everything, from visa matters and accommodation, to queries on how to join student clubs.

## Practicing your faith

Mount Kenya University Rwanda does not discriminate in terms of faith and religious beliefs. The university community welcomes and accommodates staff and students from every different faith. The university chaplaincy provides a listening ear to all faiths and reaches out to the wider religious community. The dean of students will keep you abreast of information about places of worship in Kigali as well as student faith societies on campus.

## Emotional Support

The university recognises that no student can excel if one is suffering an emotional imbalance.

Through our ably resourced wellbeing service, we offer short-term counselling and run several talks aimed at enhancing your motivation and confidence. They are intended to ensure that you approach your studies with the right frame of mind.

Our consultations and sessions are confidential, and information shared with us is not disclosed to others without your permission. We work closely with colleagues across the university to provide appropriate and coordinated support. At any time of need, you are welcome to our office to discuss how we can support you.

# STUDENT LIFE AT MKU RWANDA

Life is as much about the relationships you forge and the experiences you acquire, as your academic studies. This adage summarises a student's life at Mount Kenya University Rwanda.

Some of our best students are also some of the busiest and most involved in student life. At Mount Kenya University Rwanda, you will find that there is no shortage of opportunities to get involved in and try out new things.





The Mount Kenya University Rwanda Students Union (MKURSU) will come in handy in helping you to make the most of your university life. MKURSU is a platform that gives students a channel to ventilate issues affecting them. It is run by students for students through democratic elections held every year.

The union champions the students' voice and is at the forefront in elucidating matters that are important to students. MKURSU also supports the different clubs and sporting activities on campus through the office of the Dean of Students. The university works closely with the students' union to provide a well-rounded sports programme, cultural events and outreach activities like clean-up exercises (Umuganda).

## BEYOND THE UNIVERSITY

We are committed to providing all the support you need to develop your employability skills as a Mount Kenya University Rwanda student. We aim to ensure that by the time you graduate from the university, you will be prepared for your life and career. This means helping you to develop as an individual to acquire the skills employers look for, through your academic studies and extra-curricular activities, and advising you on the wide range of graduate opportunities open to your subjects.

You will be pleased to appreciate that many top employers target Mount Kenya University Rwanda for their recruitment activities. We also help you discover interesting openings in organisations looking for competent staff. We encourage you to take responsibility for your personal and professional development whilst with us. You will also meet potential employers wanting to recruit from your particular degree discipline. You will receive advice on how to build appropriate skills and you will be given targeted support with curriculum vitae (C.V), applications and interview preparation and performance.

We also create synergetic relationships with companies and industries to ensure you are given as much access as possible on campus to employers and available vacancies.



## Top companies employ Mount Kenya University graduates

A recent survey conducted by the office of the coordinator of Alumni Services in Rwanda revealed that top Rwandan-based companies and institutions have been recruiting MKUR graduates to drive their businesses and services. Some of these companies include:

- Equity Bank
- Rwanda Revenue Authority
- Kenya Commercial Bank- Rwanda
- Britam
- Rwandair
- Rwanda Development Board (RDB)
- King Faisal hospital

## A NETWORK FOR LIFE

As a Mount Kenya University Rwanda graduate, you'll join a big community of alumni worldwide with varied experience and culture, meaning that wherever you go, there'll be others who share your MKUR experience. Through our network of alumni associations, you can get involved in supporting and advising the next generation – so you never quite leave the University.

The importance of the connections and networks you make at university cannot be gainsaid. The lifelong friendship and strong social networks you develop whilst at the university, will help you build invaluable relationships with like-minded individuals who might later help develop your career and open up opportunities through their professional links and contacts.

We desire our alumni to feel part of the University long after their graduation. We have put in place a range of benefits and services to support you in doing so.

From the first point of contact as a prospective student, through to your future career, we help you to stay connected with the university and to build a lifelong relationship with the university. The support offered by our dean of students is an important part of your overall Mount Kenya University Rwanda experience.

## Excelling in your studies

As one of the top universities in the country, expect excellent teaching from staff who are nationally and internationally recognised experts in their fields. This is combined with excellent academic support to ensure you reach your full potential.



# What it is like to study at MKU Rwanda?

At Mount Kenya University Rwanda, we have over 50 different courses on offer ranging from, Business, IT, Education, Social sciences and Health sciences related programmes. Whichever programme you choose, you'll become part of a supportive learning environment where staff and students work closely together. Apart from online studies, our programmes are modular meaning that you will generally combine a number of core or compulsory modules- which give you a solid grounding in your subject area - with optional modules.

We also have dedicated study support programmes to help you in your studies by developing more effective practices and academic skills. These include workshops, presentation skills and online self-help guides and individual consultations.

## ENGLISH LANGUAGE REQUIREMENT

Since Rwanda joined the East African Community in 2007, the country adopted English as a language of instruction. If English is not your first language or was not the language of instruction in your education, you will be expected to provide evidence of your competence in the language. Preparedness in the English language and academic study skills is offered by the University at the English Proficiency section. This will allow you to develop and practice the language and study skills you need for your degree programme.

Over time, the university has been offering English proficiency to a big number of non-native speakers of English and speakers of English from different parts of the world. The department has a pool of professionals with a wide experience in teaching to help you master the language

## HOW TO APPLY

We hope that this prospectus provides you with the information you require about the university and the courses we offer, but if you have any further questions, please contact us at:

**Email:** [rwanda@mku.ac.ke](mailto:rwanda@mku.ac.ke),

**Facebook:** Mount Kenya University Rwanda,

**Twitter:** @mkurwanda,

**Whatsapp:** 0788125088.

**Website:** [www.mku.ac.ke](http://www.mku.ac.ke)

Once you have decided to study with us, our aim is to make the application process as efficient and straightforward as possible. You can apply as follows:

Visit our admission office or download an application enquiry from our website [www.mku.ac.ke](http://www.mku.ac.ke)

Complete your application and send it to us together with:

- Copies of all your academic qualifications
- 3 passport size photos
- Copy of your national identity card/passport
- Plastic file
- A ream of photocopy paper
- Application fees of Rwf 20,000 payable in the following banks:

Bank Name	Account Number
Equity Bank	4002200201113
Access Bank	1002100102095401
GT Bank	0212/0122949-1/001/5101/000
KCB	4400430448

**NOTE:** We recommend students to come with their own laptops to enhance learning.

## WHAT WE DO WITH YOUR APPLICATION

Once we receive your application, it will be handled by the relevant admissions staff for your chosen degree programme. The admission team will carefully review the information you have given in your application, your academic record and referees to ensure you meet our entry requirements.

Securing entry to Mount Kenya University is competitive, so we are unable to offer a place to everyone who applies. Each application is treated individually and on merit and how long it takes to process will depend on personal circumstances and your chosen degree course. It is therefore important to complete your application with great care (we may withdraw any offer if the information on your application is later found to be inaccurate).

## VERIFICATION OF QUALIFICATIONS

All those applying to join the University must verify their academic transcripts through the Rwanda Notary Authorisation for you to be admitted. Where necessary, you might be requested for equivalence from the Higher Education Council of Rwanda.

## UNSUCCESSFUL APPLICANTS

If your application is unsuccessful and you are unclear why, you can request feedback. We recommend that you first double check that you meet our entry requirements as it's the most common reason why applications are turned down. If you are not satisfied with your unsuccessful application, you should put your request in writing to the Registrar, Admissions office for feedback. Please note that for such requests, we normally respond only to the applicants themselves, and not proxies.

## TRANSFERS AND EXEMPTIONS

Mount Kenya University Rwanda accepts applications from students transferring from other universities within and beyond the region. For such a student to be considered for admission one will be required to fill a transfer and/or exemptions form for consideration to complete the specific degree one is undertaking. The form is provided in the admissions office. Information relating to possible exemptions is also provided in the same office.









# THE ADMISSION PROCESS

## OUR 5-STEP APPLICATION PROCESS

**1** Take a Virtual Tour at  
<https://virtualtour.mku.ac.ke>



**2** Complete your  
Online Application



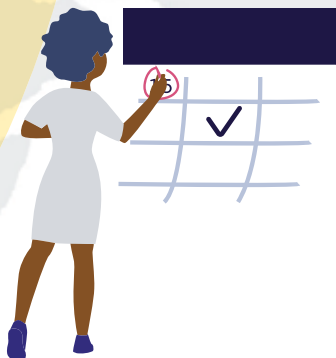
**3** Complete the  
required forms



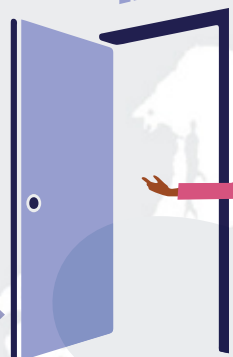
**4** Check your application status



**5** Confirm Admission



**MKU**



Welcome



MKU RWANDA MEDIA PARTNER



@RoyalFMRwanda

royalfm94.3



# MOUNT KIGALI

## MALE & FEMALE STUDENTS' HOSTELS



- COMPETITIVE PRICES
- WI-FI FACILITY
- SWIMMING POOL
- STUDY VILLAS
- 24 HOURS' SECURITY
- WALKING DISTANCE TO THE CAMPUS



### MOUNT KENYA UNIVERSITY RWANDA

EMPOWERING GENERATIONS  
THROUGH EDUCATION

EMAIL:  
[rwanda@mku.ac.ke](mailto:rwanda@mku.ac.ke)  
[marketing@mkurwanda.ac.rw](mailto:marketing@mkurwanda.ac.rw)

ENQUIRIES EMAIL:  
[marketing@mkurwanda.ac.rw](mailto:marketing@mkurwanda.ac.rw)

PHONES:  
+250 788 125088

FACEBOOK  
[OfficialMountKenyaUniversityRwanda](https://www.facebook.com/OfficialMountKenyaUniversityRwanda)

TWITTER  
[@mountkenyaUniRw](https://twitter.com/mountkenyaUniRw)

INSTAGRAM:  
[mountkenyauniversityrwanda](https://www.instagram.com/mountkenyauniversityrwanda)

VISIT:  
[www.mku.ac.ke](http://www.mku.ac.ke)



# EMPOWERING GENERATIONS THROUGH EDUCATION



**MOUNT KENYA  
UNIVERSITY  
RWANDA**

[www.mku.ac.ke](http://www.mku.ac.ke)